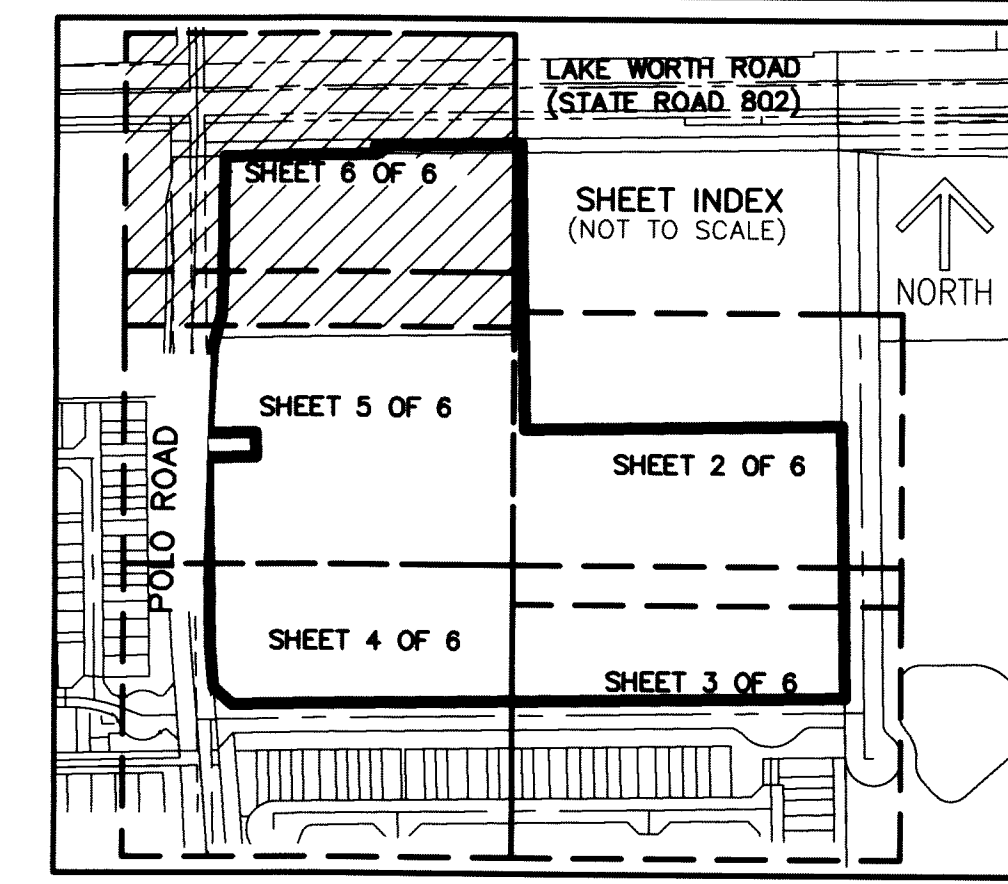


THIS INSTRUMENT PREPARED BY  
 DAVID P. LINDLEY  
 OF  
**CAULFIELD and WHEELER, INC.**  
 SURVEYORS - ENGINEERS - PLANNERS  
 7900 GLADES ROAD, SUITE 100  
 BOCA RATON, FLORIDA 33434 - (561)392-1991  
 CERTIFICATE OF AUTHORIZATION NO. LB3591

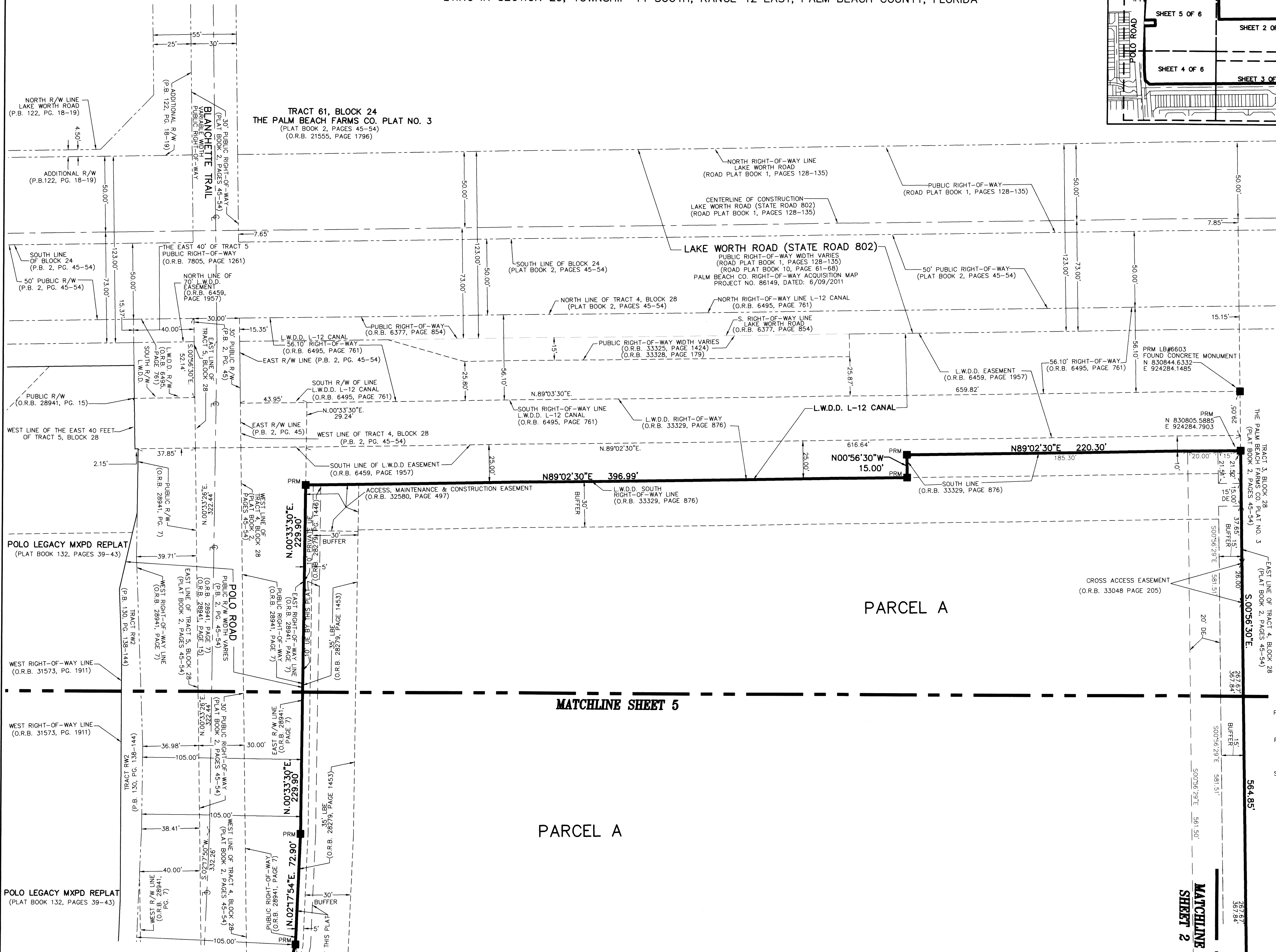
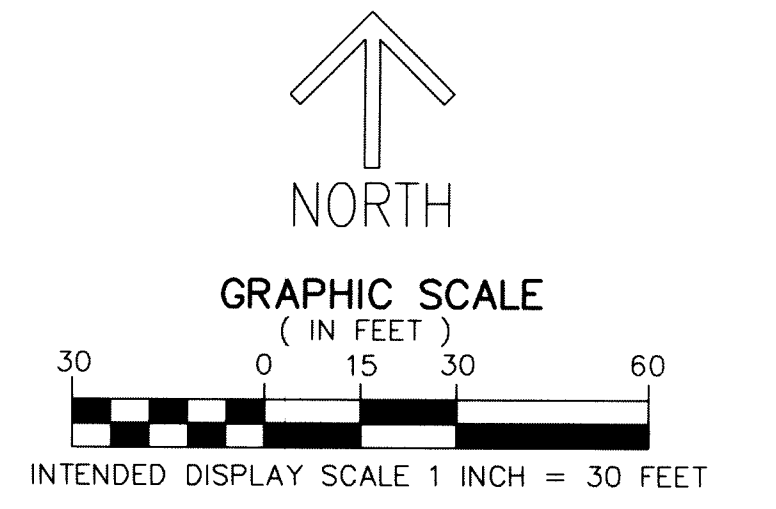
# POLO GARDENS MUPD

A MULTIPLE USE PLANNED DEVELOPMENT  
 A REPLAT OF A PORTION OF PARCEL A, FIELDS OF GULFSTREAM POLO PUD - PLAT ONE, AS RECORDED IN PLAT BOOK 123, PAGES 80 THROUGH 95, TOGETHER WITH A PORTION OF TRACT 4, BLOCK 28, PALM BEACH FARMS CO. PLAT NO. 3, AS RECORDED IN PLAT BOOK 2, PAGES 45 THROUGH 54, ALL OF THE PUBLIC RECORDS OF PALM BEACH COUNTY, FLORIDA, LYING IN SECTION 29, TOWNSHIP 44 SOUTH, RANGE 42 EAST, PALM BEACH COUNTY, FLORIDA



51

**SHEET 6 OF 6**



- LEGEND/ABBREVIATIONS**
- ⊖ CENTERLINE
  - Δ DELTA (CENTRAL ANGLE)
  - CB CHORD BEARING
  - CD CHORD DISTANCE
  - DE DRAINAGE EASEMENT
  - E EASTING (WHEN USED WITH COORDINATES)
  - L ARC LENGTH
  - LBE LANDSCAPE BUFFER EASEMENT
  - P.B. PLAT BOOK
  - PG. PAGE
  - S.W. SOUTHWEST
  - LBE LANDSCAPE BUFFER EASEMENT
  - LMAE LAKE MAINTENANCE ACCESS EASEMENT
  - LME LAKE MAINTENANCE EASEMENT
  - L.W.D. LAKE WORTH DRAINAGE DISTRICT
  - MXPD MIXED USE PLANNED DEVELOPMENT
  - N NORTHING (WHEN USED WITH COORDINATES)
  - O.R.B. OFFICIAL RECORD BOOK
  - PBCUE PALM BEACH COUNTY UTILITY EASEMENT
  - PRAS PRIVATE RESIDENTIAL ACCESS STREET
  - PC POINT OF CURVATURE
  - PI POINT OF INTERSECTION
  - PT POINT OF TANGENCY
  - PNT POINT OF NON-TANGENCY
  - R RADIUS
  - R/W RIGHT-OF-WAY
  - UE UTILITY EASEMENT
  - WMAE WATER MANAGEMENT ACCESS EASEMENT
  - PRM ■ DENOTES SET PERMANENT REFERENCE MONUMENT 4" x 4" x 24" CONCRETE MONUMENT WITH ALUMINUM DISK STAMPED "C&W PRM LB#3591" UNLESS OTHERWISE NOTED
  - PCP ● DENOTES SET PERMANENT CONTROL POINT NAIL AND METAL DISK STAMPED "PCP LB#3591"
  - DENOTES SET IRON ROD AND CAP STAMPED LB#3591
  - SND ● DENOTES SET NAIL AND DISK STAMPED "C&W PRM LB3591"
  - ▲ DENOTES FOUND PERMANENT REFERENCE MONUMENT NAIL AND DISC STAMPED "PRM" LB#3591
  - (P1) - FIELDS AT GULFSTREAM POLO PUD- PLAT ONE, AS RECORDED IN (P.B. 123, PG. 80 THROUGH 95) OF THE PUBLIC RECORDS OF PALM BEACH COUNTY FLORIDA
- NOTES**
- COORDINATES, BEARINGS AND DISTANCES**
- COORDINATES SHOWN ARE GRID  
 DATUM = NAD 83 (1990 ADJUSTMENT)  
 ZONE = FLORIDA EAST  
 LINEAR UNIT = US SURVEY FEET  
 COORDINATE SYSTEM 1983 STATE PLANE  
 TRANSVERSE MERCATOR PROJECTION  
 ALL DISTANCES ARE GROUND UNLESS OTHERWISE NOTED  
 SCALE FACTOR = 1.0000236  
 GROUND DISTANCE X SCALE FACTOR = GRID DISTANCE  
 BEARINGS AS SHOWN HEREON ARE GRID DATUM,  
 NAD 83 (1990 ADJUSTMENT), FLORIDA EAST ZONE.